

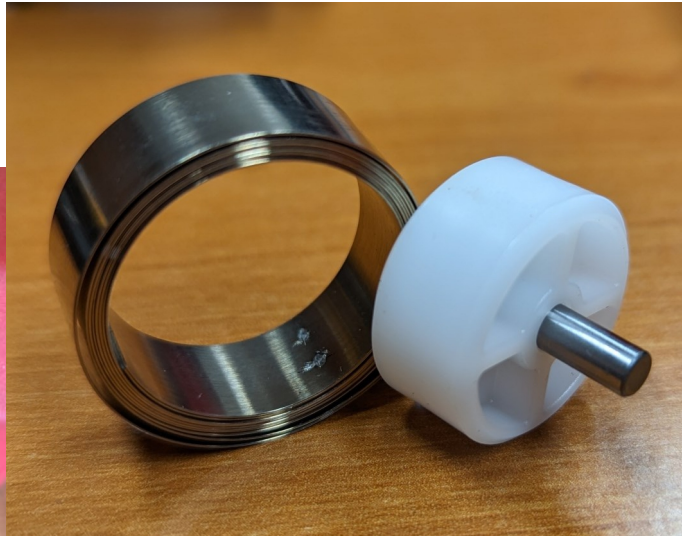
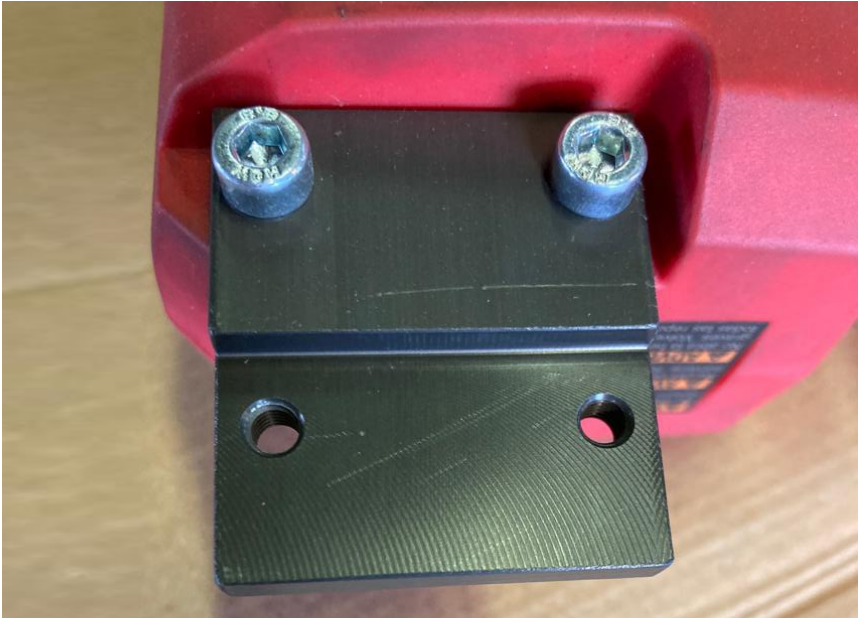
1. Prepare your stapler by removing the battery and all staples. Use a T25 to remove the following bolts.



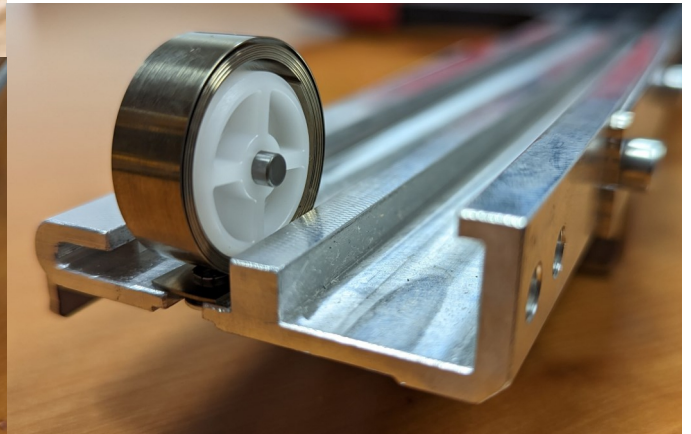
2. Save these bolts to reassembly the PowerDrive Enhanced Rail.



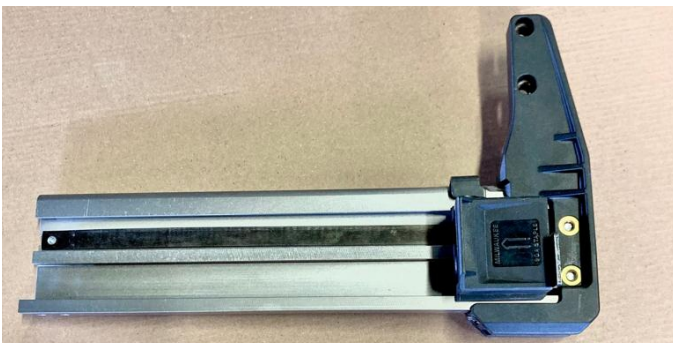
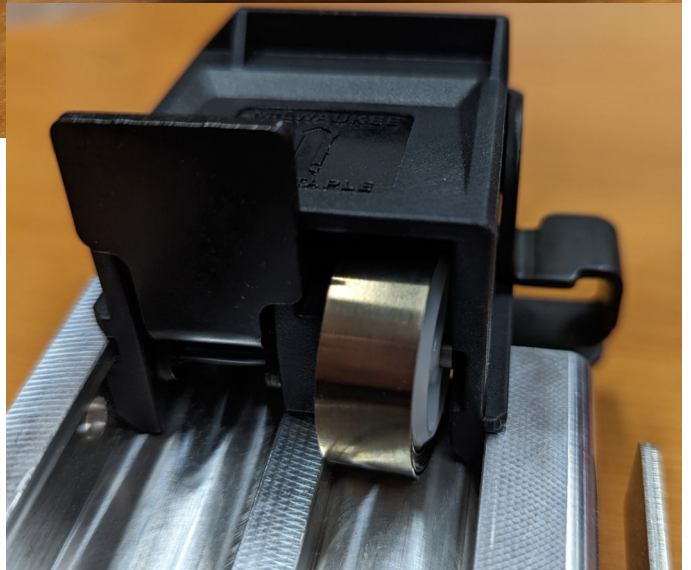
3. Remove spring coil and roller.
Be careful not to lose the pin.



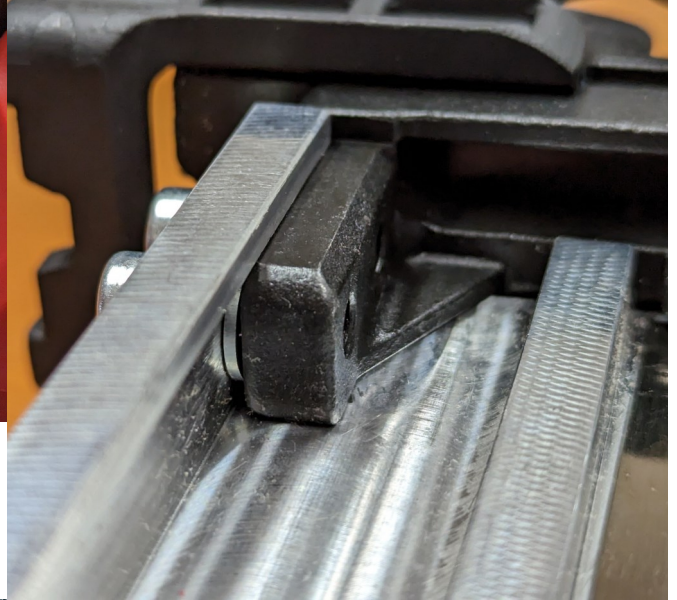
4. Attach extension plate
using original black screws.



5. Install spring coil, roller, and housing
assembly into enhanced rail. Pull down
housing into loading position until it
locks into place. This will make
attaching the rail to the tool easier.



6. Position short screws and washers as see in photos. Attach to tool by lining up rail slots with tool.



7. Slide bottom of rail into plastic retaining bracket and secure with factory screws and washers.



8. Fasten retaining bracket to bottom of extension plate with long screws. Assembly is now complete. You will have 2 short black screws leftover when finished assembling.

