

The Gripple VIT-S is the quick and easy way to manage your fruiting wires. VIT-S works directly with metal and wooden end posts, replacing difficult and unreliable chains.

FEATURES / BENEFITS

- Replaces cumbersome chains
- Manage the fruiting wires on both metal and wooden end post trellising systems
- Allows wires to be moved independently during the growing season
- Wires easily dropped to the ground for pruning
- Tension is easily applied by hand



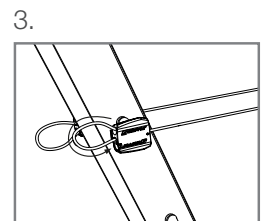
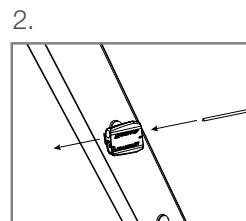
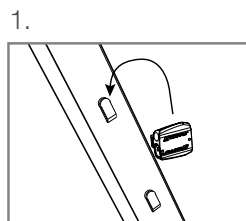
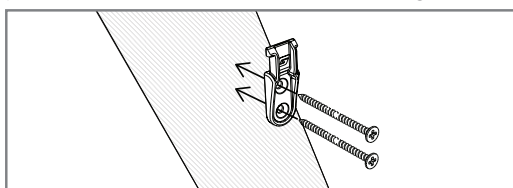
SPECIFICATION

Product	Post Type	Wire Range	Standard Wire Gauge	Maximum Working Load
VIT-S	Metal	1.40 mm - 2.60 mm	17 SWG - 12½ SWG	400 kg
VIT-S Kit	Wooden & Metal			

VIT-S can be installed directly onto metal end posts or on wooden & metal posts when bought as a kit with the bespoke VIT-S Hook.

INSTALLATION

For Installation of the VIT-S Kit on wooden & metal posts; Install the VIT-S hook before continuing...



TIPS

- Loop the tail wire back into the unit to provide a safe, neat finish
- Install additional VIT-S Hooks to allow positioning up and down the post
- For video installation instructions visit our YouTube channel GrippleTV UK

