

The Gripple GP No. 1 and No. 2 are designed with a flat leading edge to create a stable end stop for trellises which use metal end posts.

FEATURES / BENEFITS

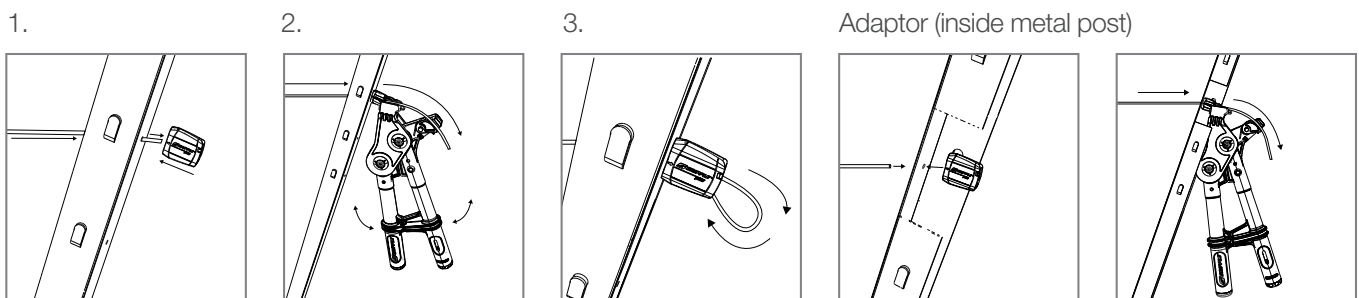
- Terminate and tension in one
- Ideal for use on steel wire and nylon monofilament
- High grade ceramic roller for corrosion resistance
- Spare integral channel allows safe tail wire return
- Tensioned using a Torq Tool and Adaptor in recessed applications
- Easily adjusted/released (GP1)



SPECIFICATION

Product	Wire Range	Standard Wire Gauge	Maximum Working Load
GP No. 1	1.80 mm - 3.00 mm	15 SWG - 11 SWG	400 kg
GP No. 2	3.00 mm - 4.20 mm	10½ SWG - 7½ SWG	600 kg

INSTALLATION



TIPS

- If the post is installed 'open-side-out', there is a handy adaptor that can be fitted to the tool to make tensioning easier
- Use setting key to adjust/release (GP1)

